



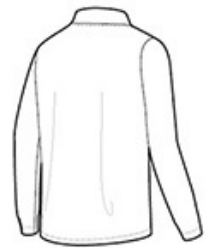
Nike Therma-FIT Full-Zip Fleece. NKAH6418



Designed to help keep you warm during cold-weather workouts, this breathable Nike Therma-FIT style manages moisture to perform. It's designed with a zip-through collar, reverse coil zippers, front zippered pockets and open cuffs. The contrast heat transfer Swoosh design trademark is on the left sleeve. Made of 7-ounce, 100% polyester Therma-FIT fabric.**



front



back

HOW TO MEASURE



CHEST
With arms down at sides, measure around the upper body, under arms and over the fullest part of the chest.

SIZE CHART

	XS	S	M	L	XL	2XL	3XL	4XL
Chest	32-35	35-37 1/2	37 1/2 -41	41 - 44	44-48 1/2	48 1/2 - 53 1/2	53 1/2 - 58	58-63

COLOR INFORMATION



Anthracite



Black



Dark Grey
Heather



Game Royal



Midnight Navy